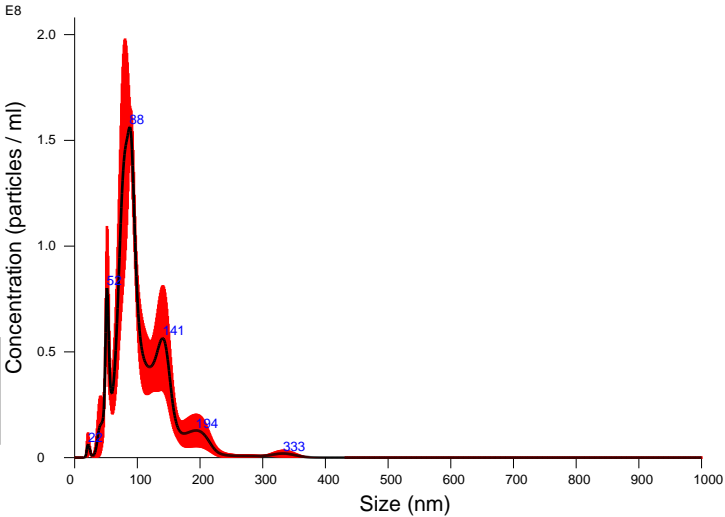


FTLA Concentration / Size graph for Experiment:  
PBS-HAT 1000x 5 60 120 2024-10-22 12-54-16



Averaged FTLA Concentration / Size for Experiment:  
PBS-HAT 1000x 5 60 120 2024-10-22 12-54-16  
Error bars indicate + / - 1 standard error of the mean

Included Files

PBS-HAT 1000x 5 60 120 2024-10-22 12-57-17  
PBS-HAT 1000x 5 60 120 2024-10-22 12-58-22  
PBS-HAT 1000x 5 60 120 2024-10-22 12-59-27  
PBS-HAT 1000x 5 60 120 2024-10-22 13-00-32  
PBS-HAT 1000x 5 60 120 2024-10-22 13-01-37

Details

NTA Version: NTA 3.4 - Sample Assistant Build 3.4.4 - SA  
Script Used: SOP Standard Measurement 12-54-16PM 22O~  
Time Captured: 12:54:16 22/10/2024  
Operator: Jitka NeburkovÆ  
Pre-treatment:  
Sample Name:  
Diluent:  
Remarks:

Capture Settings

Camera Type: sCMOS  
Laser Type: Blue405  
Camera Level: 12  
Slider Shutter: 1200  
Slider Gain: 146  
FPS: 25.0  
Number of Frames: 1498  
Temperature: 25.0 - 25.0 °C  
Viscosity: 1.0 cP  
Dilution factor: 1 x 10e3  
Syringe Pump Speed: 120

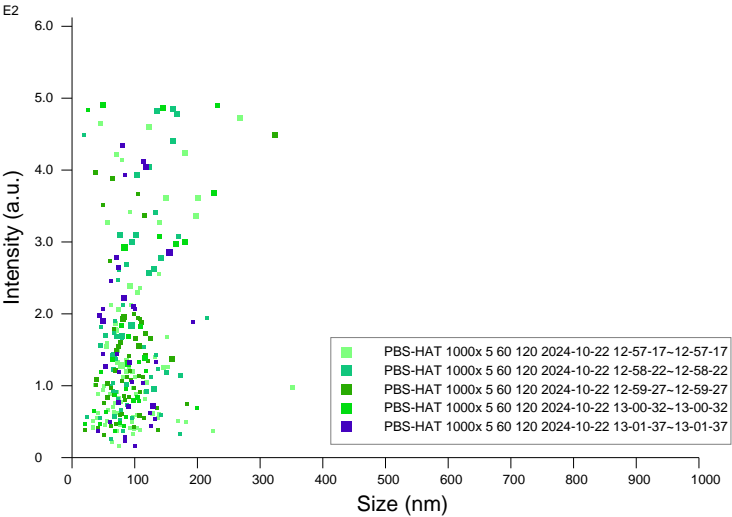
Analysis Settings

Detect Threshold: 5  
Blur Size: Auto  
Max Jump Distance: Auto: 14.6 - 22.5 pix

Results

Stats: Merged Data  
Mean: 106.1 nm  
Mode: 88.0 nm  
SD: 46.8 nm  
D10: 60.2 nm  
D50: 92.6 nm  
D90: 159.8 nm

Stats: Mean +/- Standard Error  
Mean: 106.1 +/- 4.2 nm  
Mode: 88.7 +/- 14.5 nm  
SD: 44.1 +/- 4.9 nm  
D10: 59.4 +/- 3.4 nm  
D50: 93.8 +/- 3.7 nm  
D90: 162.8 +/- 13.9 nm  
Concentration (Upgrade): 8.97e+09 +/- 1.49e+09 particles/ml  
0.8 +/- 0.1 particles/frame  
1.0 +/- 0.2 centres/frame  
Concentration measurements may be unreliable  
See summary file for more info



Intensity / Size graph for Experiment:  
PBS-HAT 1000x 5 60 120 2024-10-22 12-54-16

Script Used: (Full Text):

SOP Standard Measurement 12-54-16PM 22Oct2024.txt